

CalWORKs DIVISION OCTOBER 2004 NEWSLETTER

Published by the CalWORKs Division



CalWORKs - RCA & Supportive Services Programs

Q: What action is taken when a participant reports a direct child support payment and the source is not known?

A: When a participant reports receipt of a direct child support payment and the source is not known, the participant must be contacted to determine if the payment was received from the absent parent, court trustee, etc. For LEADER, it is necessary to enter the correct type of Child/Spousal payment. To add/change Child/Support Income: From the **Data Collection** subsystem; select the **Child/Spousal Support Income Summary** screen, enter the case number and select the *Open Window* button. Select the *New* button if adding income. If changing income, highlight the record and click the *Detail* button.

VOTER REGISTRATION REMINDER!

To be eligible to vote in this upcoming election, all Voter Registration forms must be submitted to the Registrar-Recorder's office by October 18, 2004. Revised voter registration instructions will be available on-line on LEADER shortly.



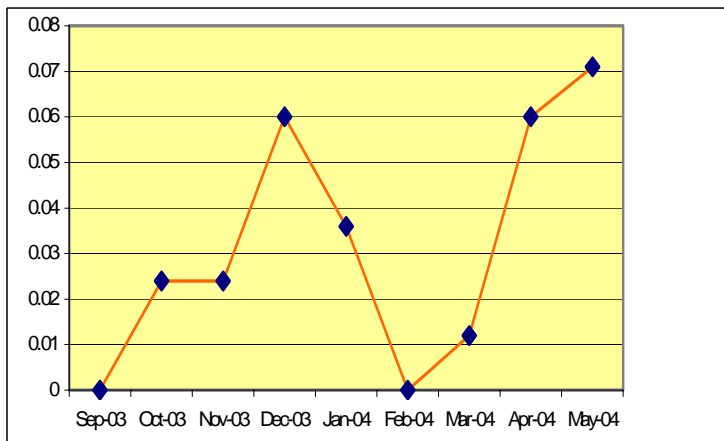
BLUE RIBBON SUMMIT CONFERENCE

On August 23, 2004, DPSS and Child Support Services Department (CSSD) hosted the Blue Ribbon Summit Conference. The conference brought DPSS and CSSD staff together to further enhance relationships and to develop an action plan to increase child support collections. Those in attendance included staff from CalWORKs and CSSD district offices, and other Federal, State and County representatives.

The conference was a great success and it represented the start of an even greater partnership between DPSS and CSSD staff who are working together for families. The departments are now looking forward to working together to implement the recommendations that DPSS and CSSD staff provided during the conference.

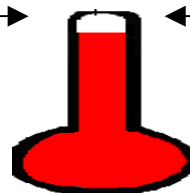
In May 2004, utilization of supportive services among all GAIN registrants increased by 7% from where we were in September 2003. To continue increasing utilization of supportive services, we need you to keep encouraging participants to access and remain engaged in supportive services. This will help us continue to meet the Departmental goal of increasing utilization of Supportive Services.

Dept'l goal 6% by Sept. 04



DIRECT DEPOSIT UPDATE

CalWORKs/RCA → Target: 10,000 ← As of September 16, 2004: 9,466



As of September 16, 2004, a total of 9,466 CalWORKs families were enrolled in direct deposit. Districts did a great job in achieving 95% of the 10,000 goal. Keep up the good work!

As a reminder, don't forget to review direct deposit information with all applicants/participants at intake and at any point of contact.

TIME LIMITS Q & A

- Q. Does LEADER issue time limit Notice of Actions (NOAs).**
- A. Yes.** LEADER is programmed to issue 54, 58 and 60 months NOAs. In addition, LEADER sends an informing notice at approval, re-determination and upon request. LEADER also sends NOAs when the time clock is extended beyond 60 months. A Manual Letter will be issued soon on several new and revised time limit NOAs.



The Purple Ribbon is the symbol of identification for Domestic Violence Awareness **October is Domestic Violence Awareness Month.**