



# CalWORKs Division

## June 2006

### Newsletter

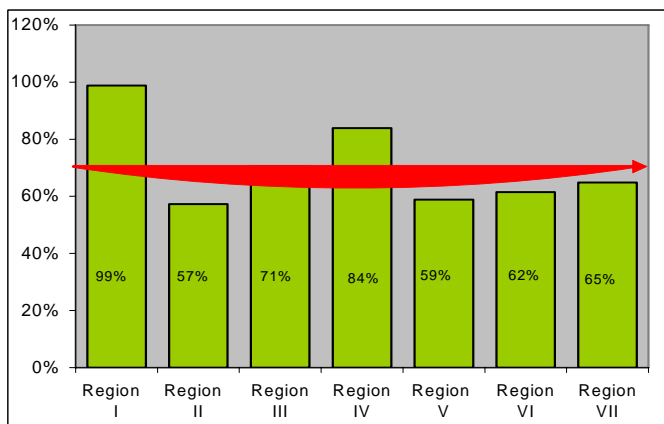
Published by the CalWORKs Division



**Father's Day**

#### DEPARTMENTAL GOAL FOR SPECIALIZED SUPPORTIVE SERVICES

Congratulations! In the month of March 2006, we almost met our Departmental goal of increasing the percentage of participants who commenced specialized supportive services to 70%, with 69.88% participants starting services. The chart below provides the percentage of participants by Region who commenced services in the month of March.



#### Reminder To GAIN Services Workers:

Upon receipt of the PA 1923 "Treatment/Services Verification Form" from the providers, verifying that the participant is actively engaged in specialized supportive services, please do the following:

1. End the sanction/compliance process if the participant is sanctioned or in non-compliance.
2. Add the appropriate specialized supportive services component.
3. Follow-up with the provider to discuss participation.



#### DID YOU KNOW?? TIMED-OUT PARTICIPANTS ARE NOT ELIGIBLE FOR GENERAL RELIEF

Did you know that adults who are ineligible for CalWORKs due to the 60-month time limits are also **not** eligible for General Relief (GR) until their youngest child reaches 18 years of age, regardless of whether the timed-out participant moved out of the home or that the child left the home? That's right. GR applications submitted by timed-out CalWORKs participants are to be denied. See GR policy, Section 40-105.7 in the LEADER Handbook. Please remember that although LEADER provides eligibility determination, always ensure that policy is consistent with the results.

#### TEMPORARY HOMELESS ASSISTANCE PROGRAM (THAP)+14 PAYMENT TYPE MODIFICATIONS (LEADER Build #192)

Effective November 21, 2005, policy for the THAP+14 Program was changed, categorizing the following as exceptions to the Once-in-a-Lifetime benefits available to eligible applicants/participants:

- a) Domestic Violence;
- b) Physical or Mental illness;
- c) Prior residence becoming uninhabitable; and
- d) Natural Disaster.

The Payment Types on LEADER were changed to reflect this new policy. The new payment types reflect (1) the Once-in-a-Lifetime payment and (2) an exception payment.

The use of the two different payment types to identify the Once-in-a-Lifetime issuance displayed at the end of the Payment Type Table may have inadvertently caused some of the Eligibility Workers to select the wrong payment type when issuing the THAP+14 benefits.

LEADER Build #192 corrected this problem by moving the two Once-in-a-Lifetime Payment Types to the beginning of the THAP+14 pay type sequence on the Payment Type Table instead of at the end. This LEADER modification went into production on Friday, June 2, 2006.

Below, for your reference, is a list of the THAP+14 Payment Types:

1. **Once-in-a-Lifetime:**
  - THAP+14-1st Issuance
  - THAP+14-2nd Issuance
2. **Exceptions:**
  - THAP+14-1st Issuance/DV (Domestic Violence)
  - THAP+14-2nd Issuance/DV (Domestic Violence)
  - THAP+14-1st Issuance/U (Prior residence becoming uninhabitable)
  - THAP+14-2nd Issuance/U (Prior residence becoming uninhabitable)
  - THAP+14-1st Issuance/PM (Physical or Mental illness)
  - THAP+14-2nd Issuance/PM (Physical or Mental illness)
  - THAP+14-1st Issuance/D (Natural Disaster)
  - THAP+14-2nd Issuance/D (Natural Disaster)

