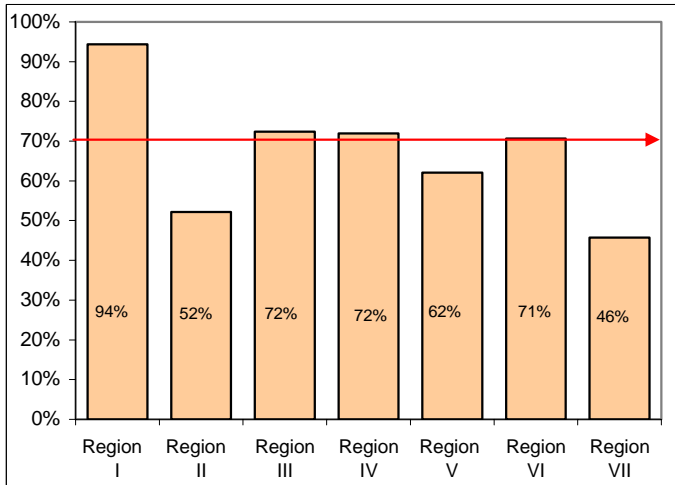


# CalWORKs Division September 2006 Newsletter

Published by the CalWORKs Division

## DEPARTMENTAL GOAL FOR SPECIALIZED SUPPORTIVE SERVICES

In the month of June 2006, the overall percentage of participants commencing Specialized Supportive Services (SSS) was 66%. The chart below provides the percentage of participants beginning services by GAIN Region.



Here are some things you can do to increase our SSS take-up rate:

- On back-door referrals, check for the appropriate service requested on the PA 1923, especially for Domestic Violence (DV) services.
- If the service provider is providing Legal DV services, open a DV component with 002L as a session type.
- If both types of DV services are requested, make sure components for 002 and 002L are open separately.

Please continue to follow-up with the participants you have referred to SSS and make sure they start their services. If you or your participants are having problems with a service provider, please let us know. GAIN Services Supervisors and Deputy Regional Administrators may contact the staff listed below for questions in the following areas:

Domestic Violence – Lola Nevarez at (562) 908-6326  
Substance Abuse – Jean Dean at (562) 908-6325  
Mental Health – Maria Ayala at (562) 908-6327

## THE MAXIMUM FAMILY GRANT (MFG) RULE: INFORMATION FOR APPLICANTS/PARTICIPANTS

It is part of the Eligibility Worker's (EW) responsibility to inform applicants/participants of the MFG rule. The CW 2012, The Maximum Family Grant (MFG) Rule For Recipients of Cash Aid, (LEADER-generated) must be provided at Intake, at yearly redetermination or whenever there is a change in payee. The EW must:

- Review the CW 2012 with the applicant/participant at Intake and redetermination;
- Ensure the applicant/participant understands the rule;
- Obtain the applicant's/participant's signature on the form. If the applicant/participant refuses to sign the form, the EW must document the refusal on the form and in LEADER **Case Comments**; and
- File the signed/documented CW 2012 in the case.

For more information on the MFG rule, see CW Policy Section 44-314.2 – MFG-Ten Consecutive Months, in the LEADER Handbook.

## HOUSING LOCATOR SERVICES

Effective 9-5-06, Homeless Case Managers can refer CalWORKs WtW homeless families to Housing Locator services. DPSS has contracted with two Housing Locator agencies that will provide innovative solutions to address WtW homeless families' barriers to finding and obtaining affordable permanent housing. The Housing Locators will work hand-in-hand with Homeless Case Managers to address and resolve existing issues, such as poor credit, bad credit, and/or eviction histories. Eligibility Workers are to refer all homeless families to the Homeless Case Managers.

Final instructions will be released shortly.

\*\*\*\*\*

### **If there were only 100 people in Los Angeles County:**

- 45 would be Latino
- 31 would be Caucasian
- 12 would be Asian or Pacific Islander
- 9 would be African-American
- 3 would be Native American or other
- 28 would be children
- 36 would have been born outside the U.S.
- 31 would have no **health insurance**
- 17 would live in **overcrowded housing**
- 18 would live below the official **poverty line**
- 7 would be children living below the poverty line
- 30 would live in households making less than \$25,000

