



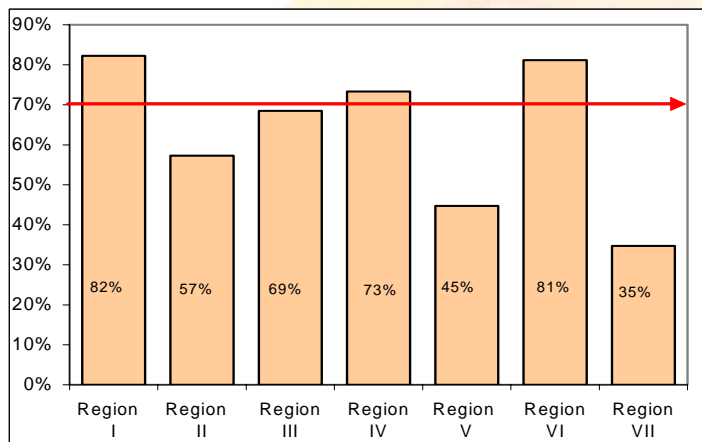
CalWORKs Division October 2006 Newsletter

Published by the CalWORKs Division



DEPARTMENTAL GOAL FOR SPECIALIZED SUPPORTIVE SERVICES

In the month of July 2006, the overall percentage of participants commencing Specialized Supportive Services (SSS) was 62%. The chart below provides the percentage of participants beginning services by GAIN Region.



Reminder to GAIN Services Workers

Please continue to follow-up with the participants you have referred or assigned to SSS in order to ensure that they begin services. Here is what you can do to help the Department increase the take-up rate:

- Ensure child care and transportation are authorized.
- Promptly reschedule participants, as needed.
- Be supportive and sensitive to the needs of participants with supportive services issues.

Upon receipt of the PA 1923, "Treatment/Services Verification Referral," form verifying that the participant is actively engaged in specialized supportive services, send the GN 6149, "CalWORKs PA 1923 Results Verification," form to the services providers to confirm receipt of the PA 1923.

MAXIMUM FAMILY GRANT (MFG) WAIVER DUE TO DOMESTIC VIOLENCE

The MFG rule can now be waived for participants who are victims of Domestic Violence (DV) when it has been determined that application of the rule penalizes the participant or would place the participant at further risk of abuse. Waiver determinations will be on a case-by-case basis. Instructions will be released within the next few months. In the interim, District Offices must contact CalWORKs Program Staff when a participant requests an MFG waiver due to DV.

NATIONAL VOTER REGISTRATION ACT

The National Voter Registration Act of 1993, also known as Motor Voter, requires that DPSS provides voter registration services to all visitors in District Offices. Eligibility Workers must offer and provide assistance with completing the Voter Registration Form at:

- Intake
- Change of address
- Redetermination
- Upon request



Don't forget that the deadline to register to vote is 15 days before each local and statewide Election Day, **so encourage people to register now!** Let others know and prepare yourself to vote in the upcoming General Election on November 7, 2006.

DIRECT RENT IS COMING EARLY 2007

Direct Rent (DR) payments go directly to the landlord for the participant's rent (from the CalWORKs aid payment). They are mandatory for cases with a drug felony and voluntary for all other participants. DR payments can help ensure rent is paid on time to avoid late fees or evictions.

A DR Payment is:

- Paid from the public assistance grant;
- Used in computing Food Stamp allotments; and
- Issued on the 1st of each month, and for the current month's rent.

Any cash aid remaining after the Direct Rent is paid will be issued to the participant.

THE CalWORKs SECTION WELCOMES OUR NEWEST MEMBER!

The CalWORKs Section welcomes Arnetta Counts, who has accepted an HSA I position with us. Arnetta has worked in the Human Resources Department, Management Information and Evaluation Section, various District Offices and she also participated as part of the LEADER roll out team. Welcome Aboard!

